

HD PRO SERIES

Series dedicated to the installer who's looking for a high-level camera making the difference in terms of image quality.



I2-380A-28

20M IR 8MP PRO HD ANALOG FIXED LENS BULLET CAMERA

This 4K bullet camera presents a stunning 8-megapixel image, equipped with a 2.8mm fixed lens, it is designed for short distance surveillance systems (up to 20m) for both indoor and outdoor scenarios. Featuring 4in1 technology selectable by a protected DIPswitch the camera is ideal for Plug & Play over existing analog infrastructure.



MAIN FEATURES

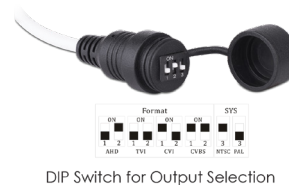
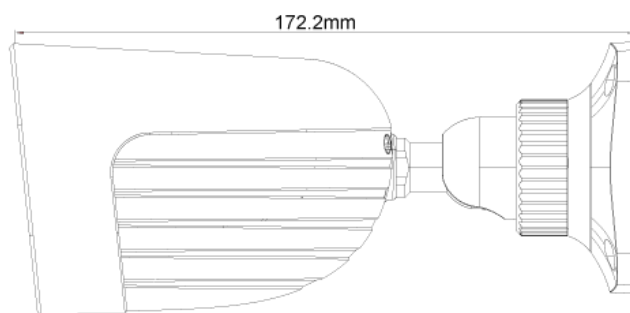
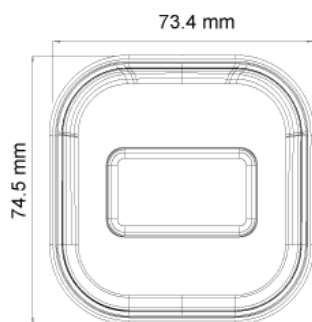
- 8MP
- Pro Series
- 3840x2160 Resolution
- Wide field of view 95°
- 3D-DNR
- 4 in 1 (DIP Switch AHD/TVI/CVI/CVBS + PAL/NTSC)
- IP67
- COC support



SPECIFICATIONS

Image Sensor	1/2.5" 8MP Sensor
Image Format	8MP/4MP - 16:9, 5MP - 4:3
Effective Pixels	3864x2202
Scanning System	Progressive
Resolution	8MP: 3840x2160 AHD/TVI/CVI 5MP: 2592x1944 AHD/TVI 4MP: 2560x1440 AHD/TVI/CVI CVBS: 700TVL
FPS	8MP @ 12/15FPS, 5MP @ 20FPS, 4MP @ 25/30FPS, CVBS @ 25/30FPS
Min. Illumination	Color: 0.01lux @F1.2, AGC ON B/W:0lux with IR"
D&N	True Day&Night-ICR
IR LED	1 LED Array (20m)
OSD Menu	Available via CoC Only
CoC Support	Yes
Day & Night Mode	Ext/Auto/Day/Night
Backlight Compensation	BLC
S/N Ratio	≥52dB(AGC OFF)
White Balance	Auto
Noise Reduction	3D-DNR
Video Output	8MP / 5MP / 4MP (Selected by OSD Menu) AHD/TVI/CVI/CVBS + PAL/NTSC (Selected by DIP Switch)
Privacy Mask	No
D-Effect	No
WDR	No
Lens (Field Of View)	2.8mm Fixed (95°)
Power	DC12V/340mA
Operation Temperature	-30° ~ 50°, 10% ~ 90% humidity
Protection Rate	IP67
Dimensions	172.2*73.4*74.5mm
Net Weight	475g
Junction Box	PR-JB12IP66 - PR-JB12IP64

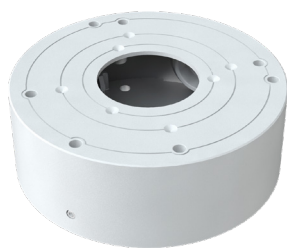
DIMENSIONS



ACCESSORIES



PR-JB12IP66
Small Water-proof Junction Box



PR-JB12IP64
Small Junction Box